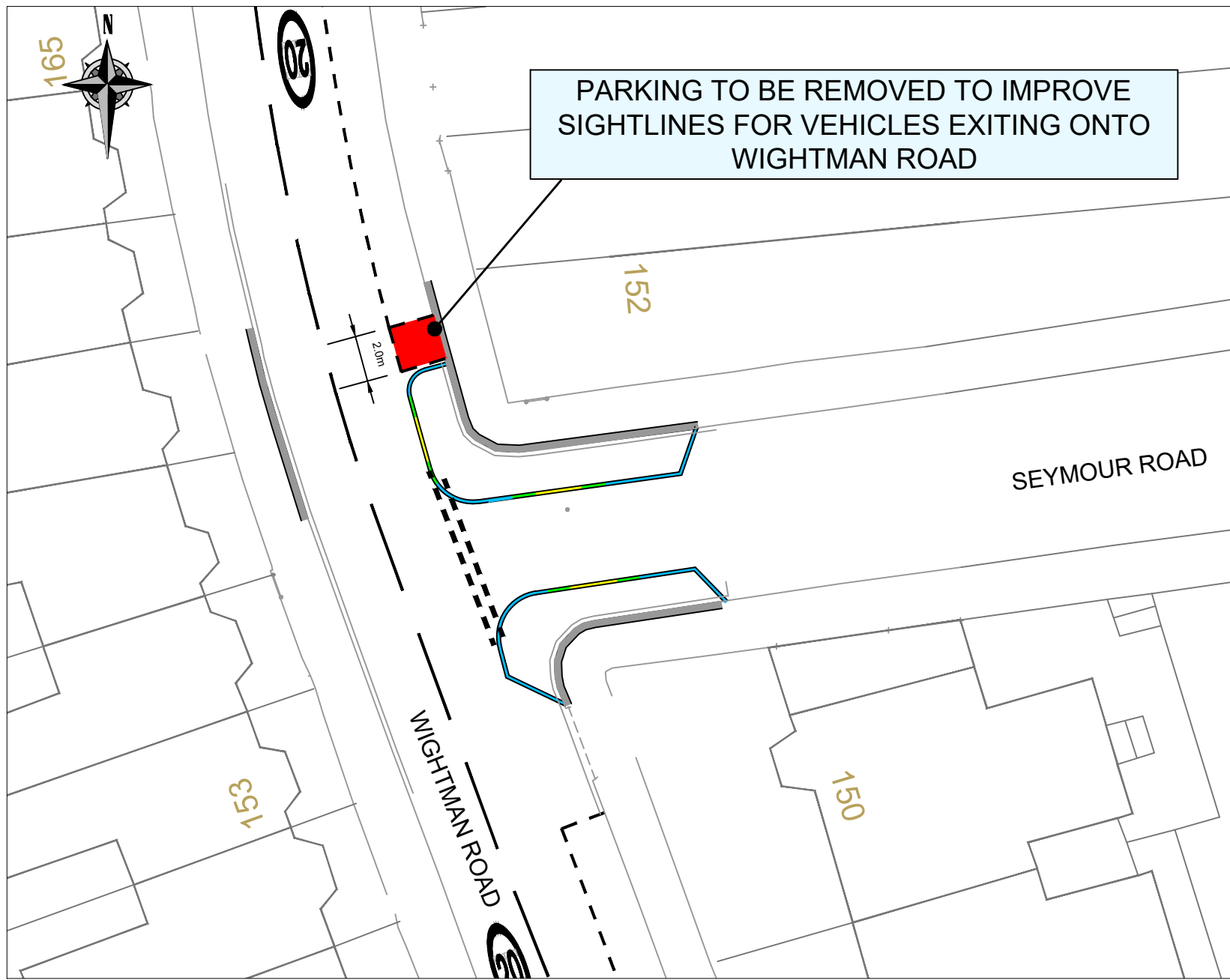
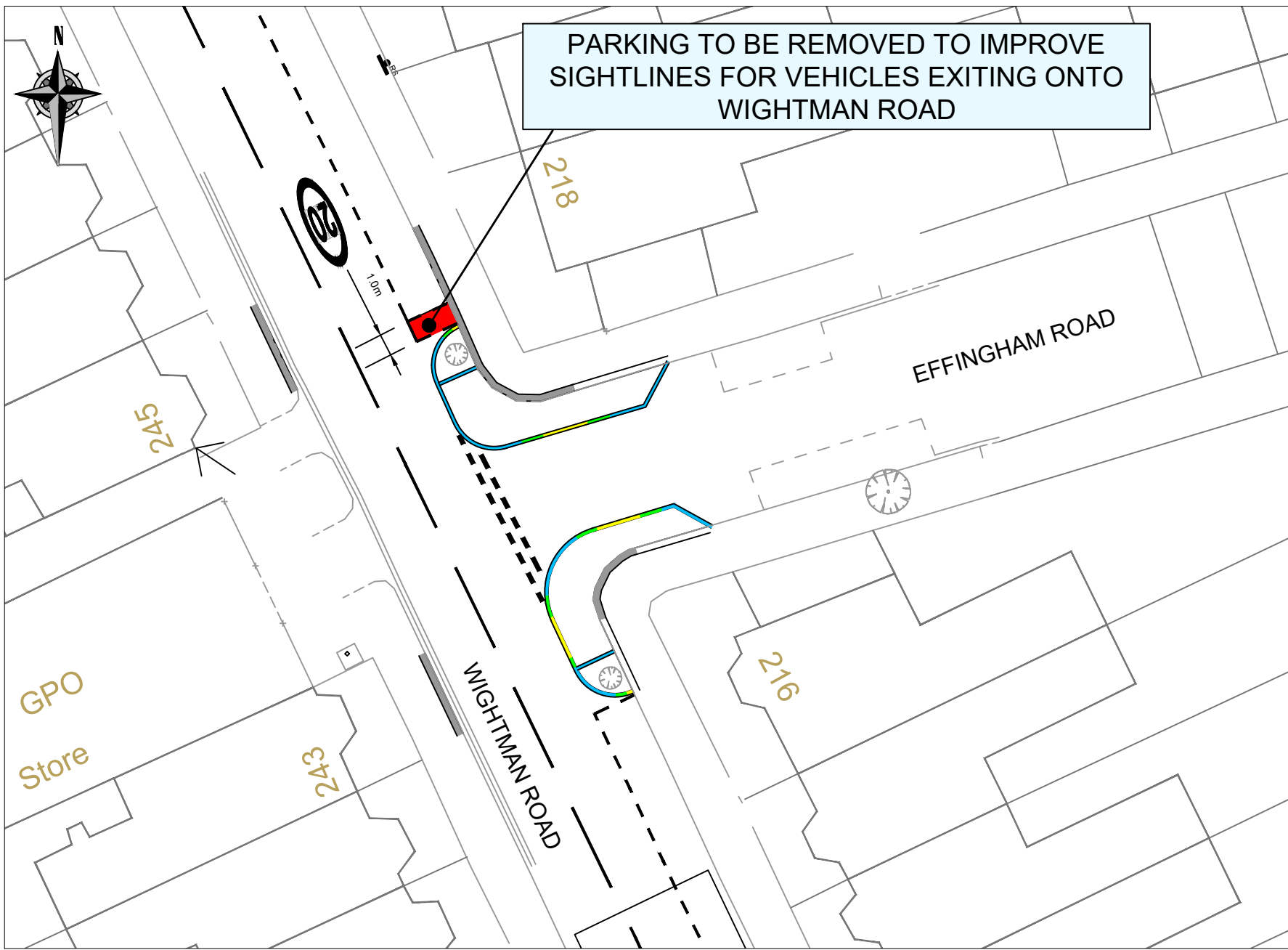


PROPOSED HIGHWAY IMPROVEMENTS ON WIGHTMAN ROAD JUNCTIONS WITH;

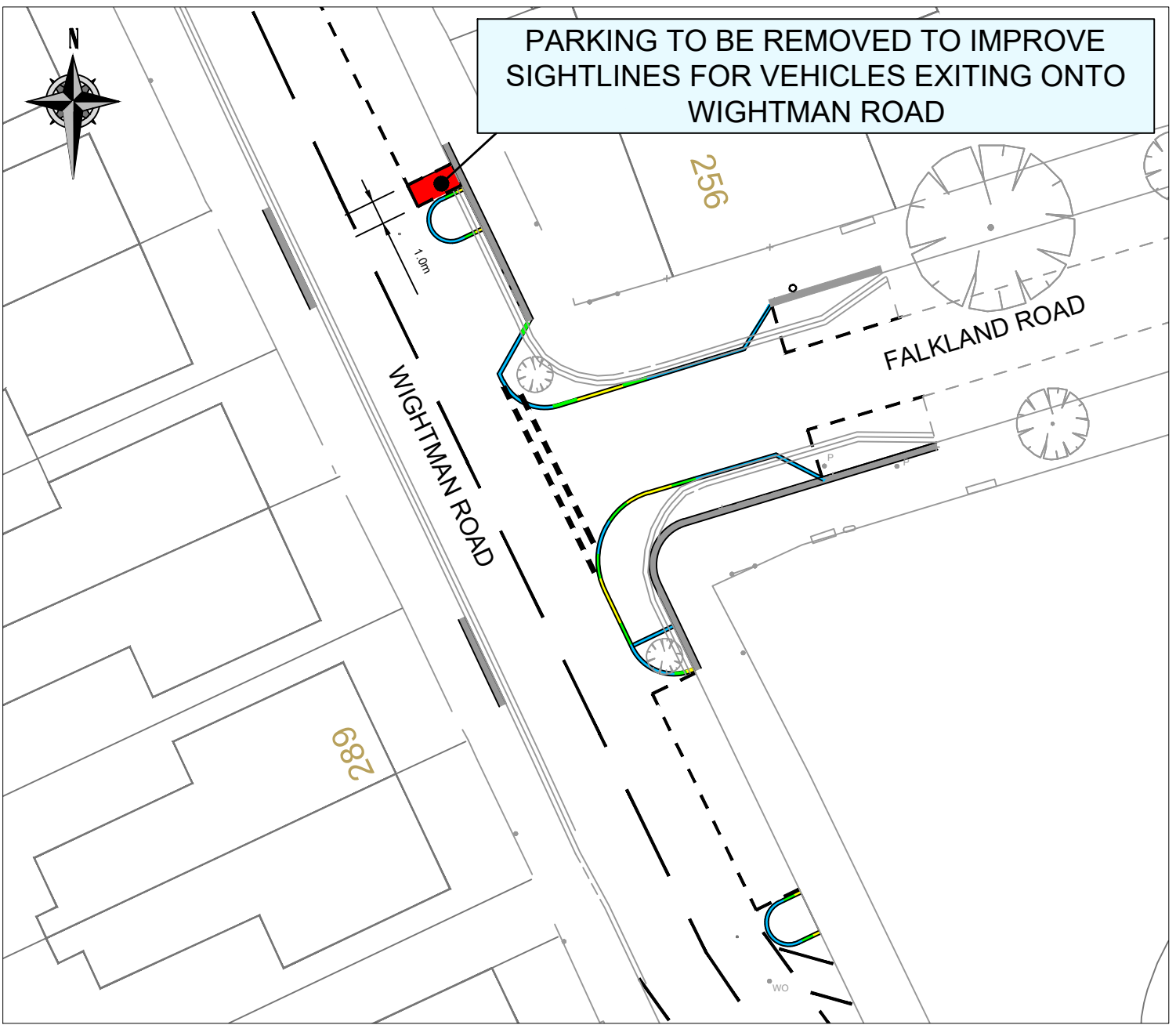
- SEYMOUR ROAD
- EFFINGHAM ROAD
- FALKLAND ROAD
- LAUSANNE ROAD
- RALEIGH ROAD



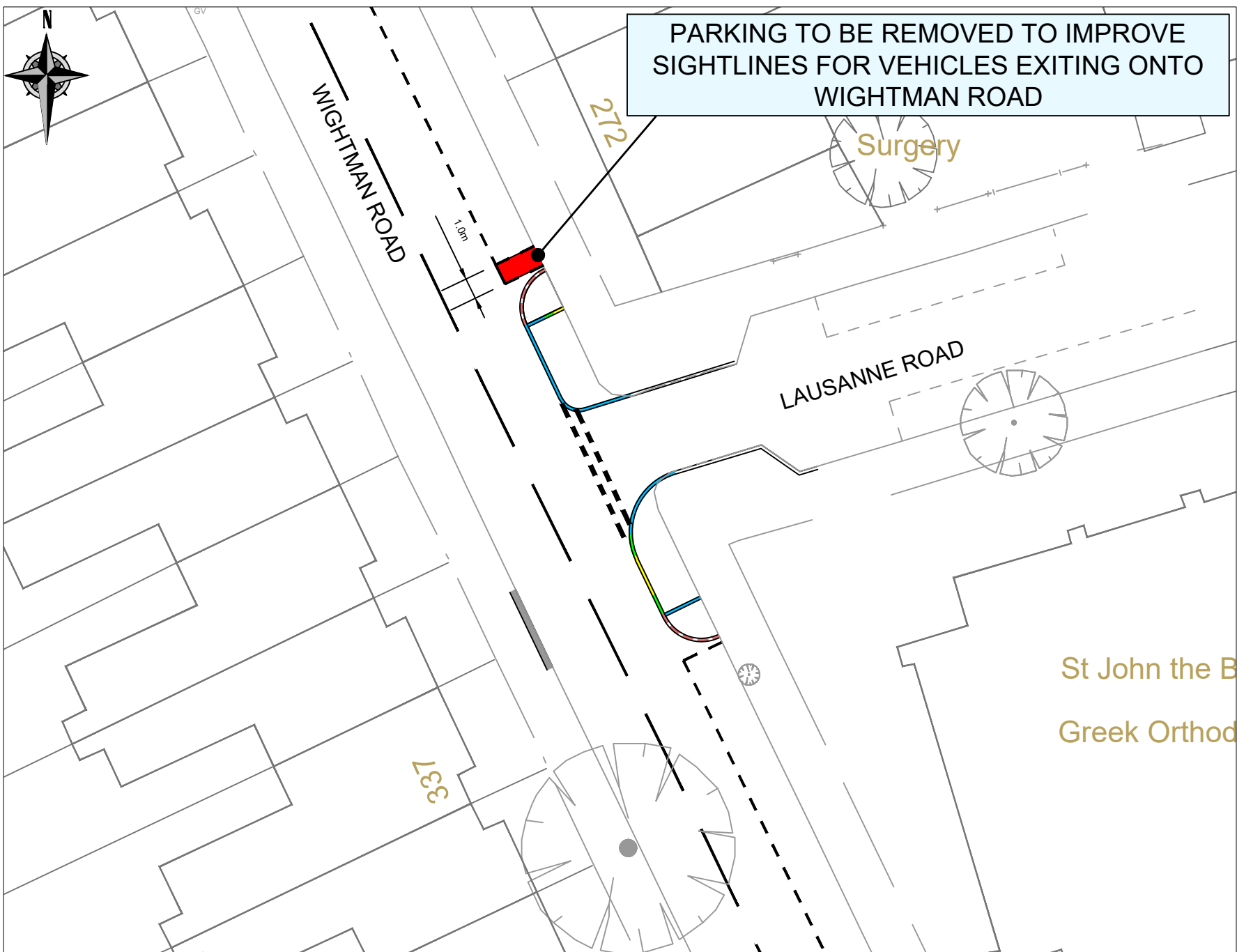
O/S NO. 152 WIGHTMAN ROAD
- REDUCE EXISTING 25M PARKING BAYS BY 2M



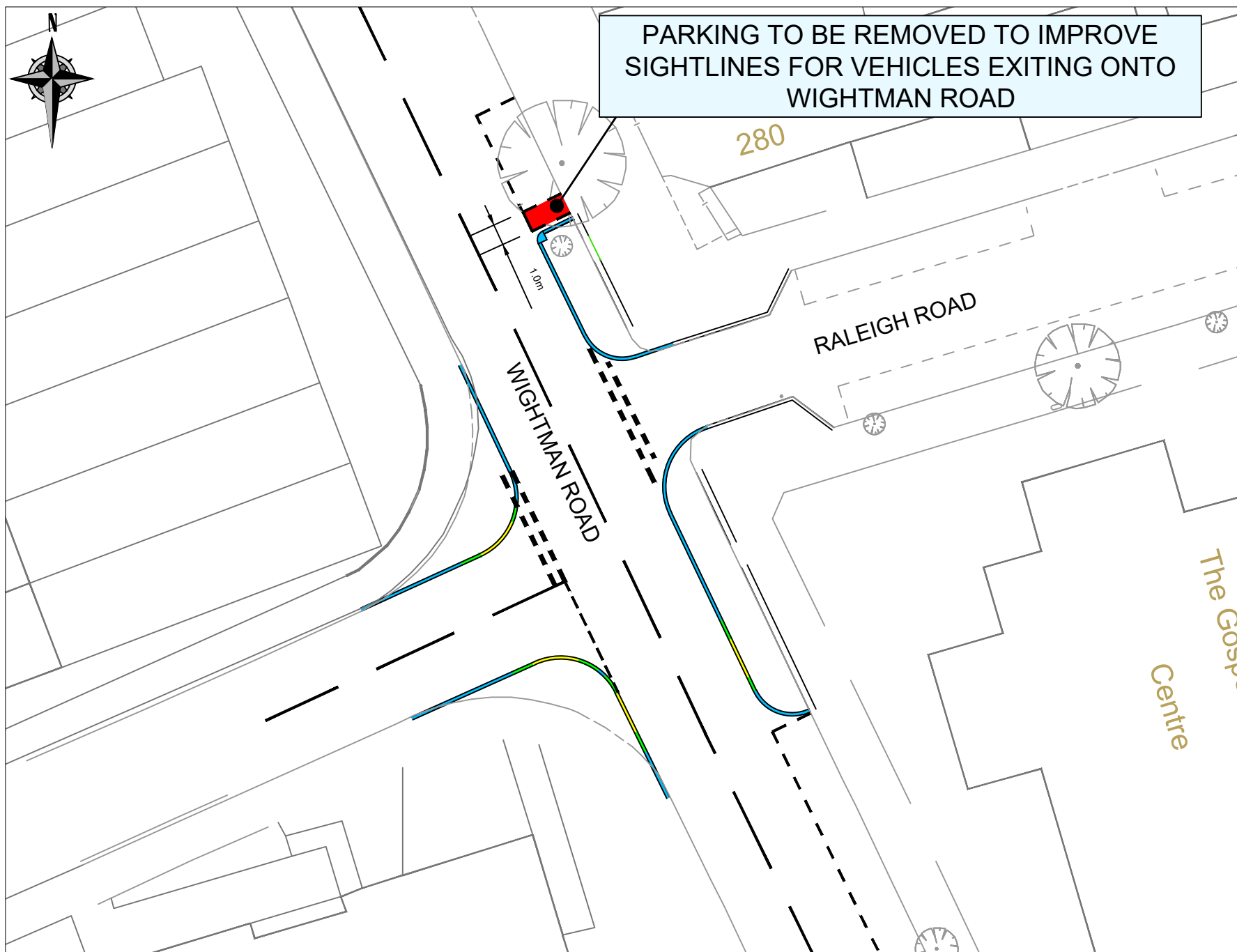
O/S NO. 218 WIGHTMAN ROAD
- REDUCE EXISTING 21M PARKING BAYS BY 1M



O/S NO. 256 WIGHTMAN ROAD
- REDUCE EXISTING 24M PARKING BAYS BY 1M



O/S NO. 272 WIGHTMAN ROAD
- REDUCE EXISTING 18M PARKING BAYS BY 1M



O/S NO. 280 WIGHTMAN ROAD
- REDUCE EXISTING 6M PARKING BAYS BY 1M